

Course Equivalency Guide aka CEG

Many colleagues simply call it the C-E-G which is an acronym for Course Equivalency Guide. It is an awesome tool for students who wish to transfer to one of the Arizona universities.

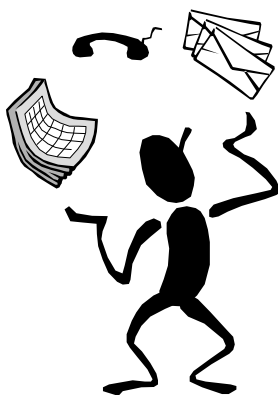
The CEG is an articulation and transfer website that allows the Arizona community colleges and universities to work together to help students make better choices in their academic careers.

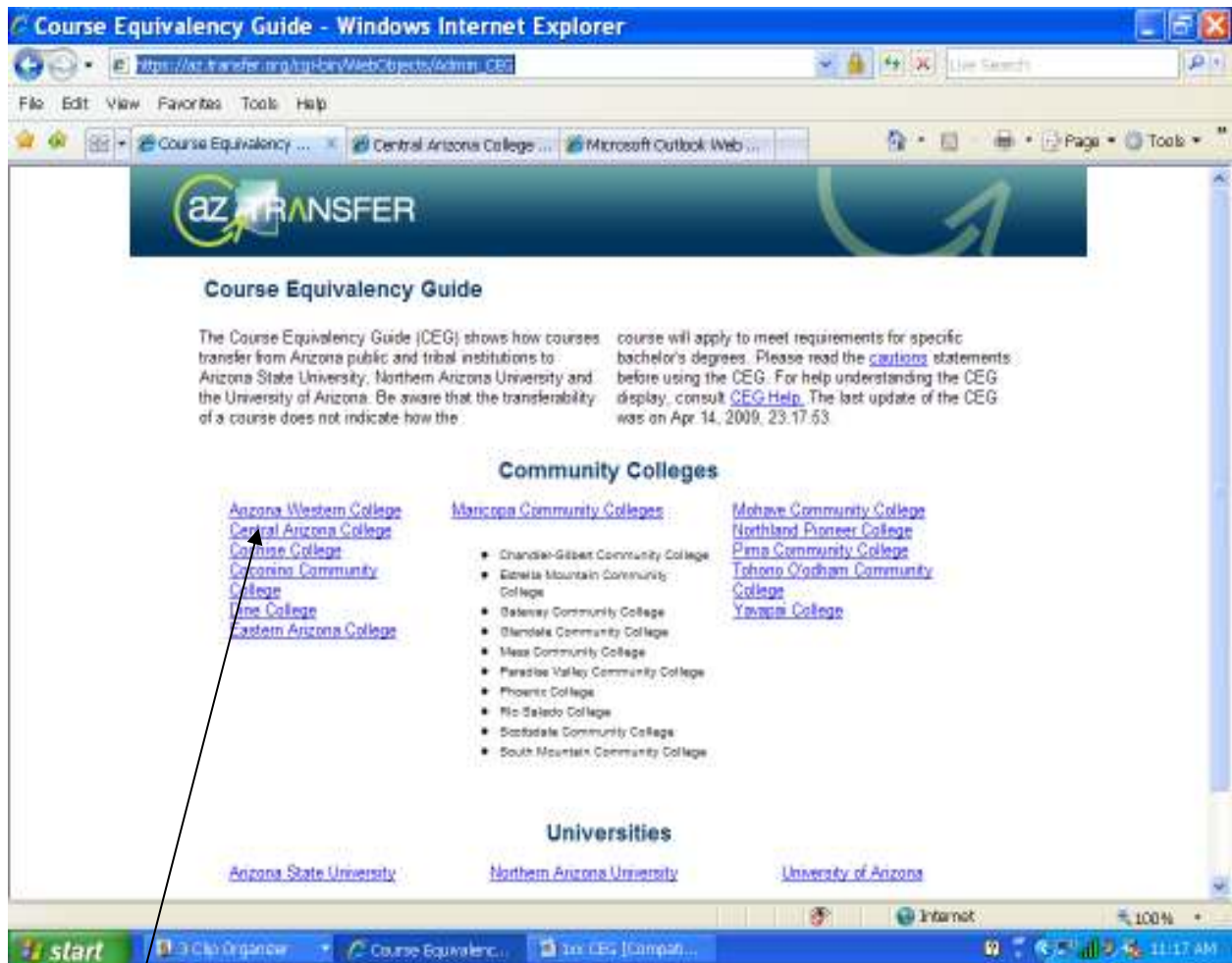
Faculty, advisors, students, parents, or other stakeholders may use the CEG to determine how a particular course will transfer to the three Arizona public universities. Anyone who has internet capabilities, can peruse the CEG!

The CEG is found at:

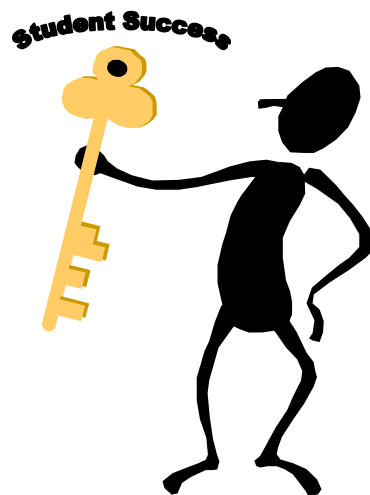
https://az.transfer.org/cgi-bin/WebObjects/Admin_CEG

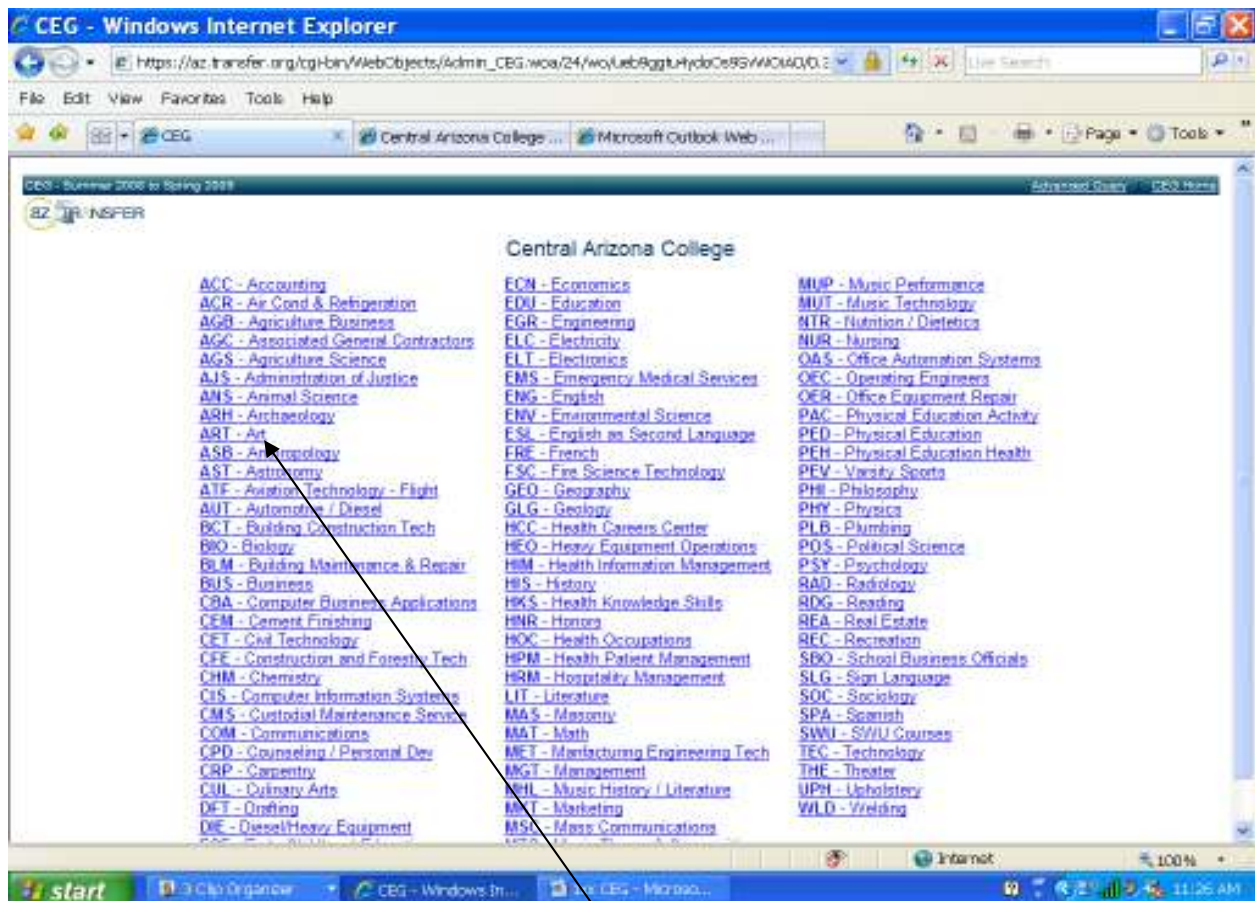
Once the CEG loads into your monitor screen, we suggest you save it to your “Favorites.” This way you will always have the link and you won’t have to wait for the curriculum office to send it to you.



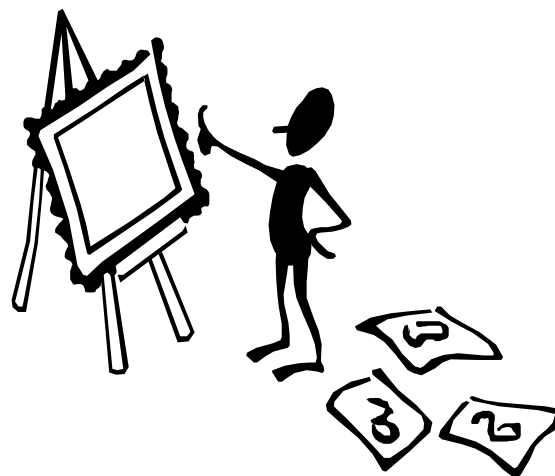


Choose the college from which you have credits that you want transferred. Central Arizona College is the second on the list; however, you may click on any of the other community colleges or universities to retrieve their information.





Click on the link for the appropriate prefix. Let's say you want to look up ART204 to see how it will transfer. Click on "ART - Art."



You will need to scroll down on the page to find ART204.

CEG - Windows Internet Explorer

https://az.transfer.org/cgi-bin/WebObjects/Admin_CBG.wco/21/wo/zTKVtH4P45MbwBYWB9MS

CEG

Central Arizona College

Microsoft Outlook Web

CCG - Summer 2008 to Spring 2009

NSFER

Central Arizona College
19 Matches Found

Course #	ASU	NAU	UA
ART 100 (3) Art Appreciation	Elective Credit	ART 100 also satisfies: Aesthetic and Humanistic Inquiry [AH]	ARE 130
ART 101 (3) Two-Dimensional Design	ART 112	ART 150 also satisfies: Aesthetic and Humanistic Inquiry [AH]	ART 102
ART 102 (3) Three-Dimensional Design	ART 115	ART 151 also satisfies: Aesthetic and Humanistic Inquiry [AH]	ART 104
ART 103 (3) Beg. Jewelry and Metalworking	Valid thru Summer II 2008 ART Dept Elective Fall 2008 and beyond: ART 272	ART 171 also satisfies: Aesthetic and Humanistic Inquiry [AH]	ART Departmental Elective
ART 104 (3) Adv. Jewelry and Metalworking	ART Dept Elective	ART 271	ART Departmental Elective
ART 105 (3) Ceramics I	ART 261	ART 161 also satisfies: Aesthetic and Humanistic Inquiry [AH]	ART Departmental Elective
ART 106 (3) Ceramics II	ART Dept Elective	ART 261	ART 273
ART 107 (3) Basic Drawing	ART 111	ART 135	ART 101 Fall 2009 and beyond: ART 101
ART 108 (3) Intermediate Drawing	ART 211	ART 136	ART Departmental Elective
ART 201 (3) Painting I	ART 223	ART 222	ART 280
ART 202 (3)	ART Dept Elective	ART 223	ART Departmental Elective

Done

start

3 Clock Organizer

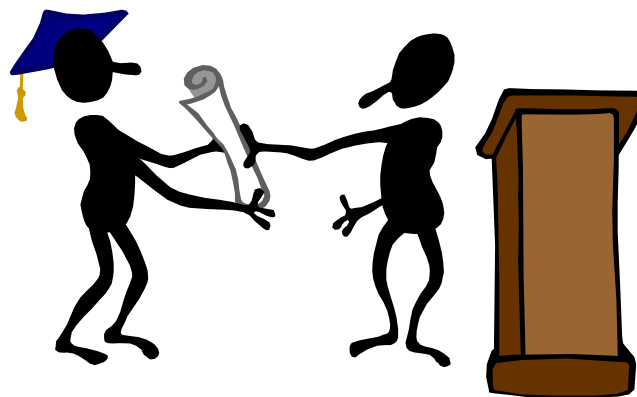
CEG - Windows In...

Doc: CEG - Microso...

Internet

100%

11:31 AM



Reading from left to right you will see ART204 transfers to Arizona State University (ASU) as ART227; Northern Arizona University (NAU) as an ART departmental elective; and the University of Arizona (U of A) as ART285. (The university designations are at the top of the columns. Please see the previous page.) With this information, the student can make a better decision as to whether or not they should take this course.

ART 106 (3) Ceramics II	ART Dept Elective	ART 261	ART 273
ART 107 (3) Basic Drawing	ART 111	ART 136	ART 101 Fall 2009 and beyond: ART 101
ART 108 (3) Intermediate Drawing	ART 211	ART 136	ART Departmental Elective
ART 201 (3) Painting I	ART 223	ART 222	ART 280
ART 202 (3) Painting II	ART Dept Elective	ART 223	ART Departmental Elective
ART 203 (3) Life Drawing	ART 214	ART 136	ART 285
ART 204 (3) Watercolor Painting	ART 227	ART Departmental Elective	ART 285
ART 205 (3) Intermediate Painting	ART Dept Elective	ART Departmental Elective	ART Departmental Elective
ART 206 (3) Portrait Drawing	ART Dept Elective	ART Departmental Elective	ART Departmental Elective
ART 207 (3) Art History I	ARS 101, Historical Awareness (H), Humanities and Fine Arts (HU)	ARH 141 also satisfies: Cultural Understanding [CU]	Valid thru Summer I 2008: ARH 201 Fall 2008 and beyond: ARH 201
ART 208 (3) Art History II	ARS 102, Humanities and Fine Arts (HU), Historical Awareness: (H)	ARH 142 also satisfies: Cultural Understanding [CU]	Valid thru Summer I 2008: ARH 202 Fall 2008 and beyond: ARH 202
ART 210 (2) Ceramics Workshop	ART Dept Elective	ART Departmental Elective	ART Departmental Elective
ART 215 (3) Printmaking	ART Dept Elective	ART Departmental Elective	ART 256

(Remember: column 1 is ASU; column 2 is NAU; and column 3 is University of Arizona.)

If you cannot find the prefix, it may be a vocational discipline and the universities prefer to review these on an individual basis. However, if you need help please contact the curriculum office. We will try to help you find the information you need:

Jennie Lee Voyce at 1-520-494-5591 or jennie.voyce@centralaz.edu

Linda Day at 1-520-494-5206 or linda.day@centralaz.edu

Mary Menzel at 1-520-494-5215 or mary.menzel@centralaz.edu